

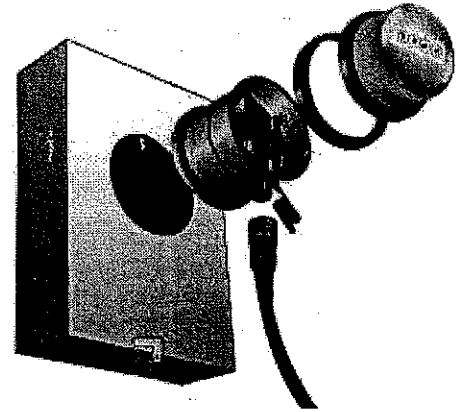
Introducing the One PlugSM Program

The Quickest, Easiest and Safest Link Between Your Portable Generator and Your Home!

[About One Plug](#) / [Using One Plug](#) / [Qualification Check](#) / [Generator Compatibility](#) / [Order Now](#) / [FAQs](#) / [Terms & Conditions](#)

Imagine getting emergency power from your portable generator directly to your home's critical appliances, without all those extension cords...in less than 5 minutes!

Thanks to the remarkable new One Plug device from FPL Energy Services, you can do exactly that and it's as easy as ...plugging in a lamp. It is the safest, simplest, quickest and most convenient way to power your home during a power outage.



With One Plug, you can

- Quickly and easily operate the appliances you need with your portable generator
- Eliminate the need for multiple extension cords throughout your home
- Feel confident that One Plug adds a new level of safety for you and your family

The One Plug program is being offered initially as a pilot program in **Miami-Dade** and **Broward** counties only. It will be expanded to other counties in FPL's territory at a future date. To order now call **877 ONE PLUG** (1-877-663-7584).

About the One Plug Program

The One Plug device is a meter based transfer switch. It is installed at the electric meter and makes powering appliances through your portable generator quick, easy and convenient. Your portable generator is easily connected to this device through a special plug and cable that is provided. This means there is no need to rewire your home. You can simply turn off your appliances on your breaker panel, plug your generator into the One Plug device, start your generator and turn on appliances located in any part of the home from your breaker panel.

And since the device uses your existing breaker panel, you can operate virtually any electric load/appliance in your home, up to the capacity of the device which is 7.2kW or 7,200 watts. It also works with most portable generators; however, you are limited to using a maximum of 7,200 watts of capacity on the generator, regardless of its overall size. If you use more, the One Plug device will automatically shut off.

Some appliances you can run using this device:

- Refrigerator/Freezer

- Television
- Lights/Lamps
- Ceiling Fans
- Radio
- Computer
- Electric Water Heater
- Well Pump
- *Portable or Room Air Conditioner

**While One Plug can power many of your electrical items, it is not designed to run your Central Air Conditioning system.*

Using the One Plug Device is as Easy as 1 – 2 – 3!

Should the power go off, you won't have to unplug appliances to connect them to extension cords. You won't even need extension cords because the One Plug device gives you a direct connection to your portable generator – outside at your meter – and the power flows through your central circuit breaker panel. Here's how it works:



Step 1: If there's a power outage, turn off all the switches on your circuit breaker panel.

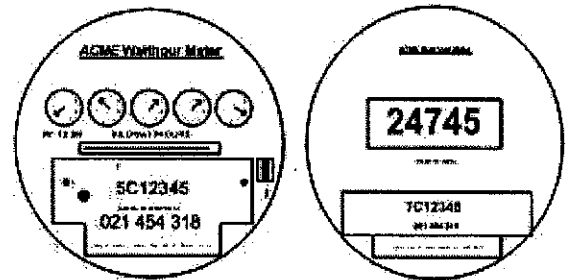
Step 2: Connect your portable generator to the One Plug device using the supplied 20-foot quick-connect cord (40-foot cord is optional).

Step 3: Start your generator, then select the appliances to receive power by turning on the switches on your circuit breaker panel. You can choose or change which appliances receive power quickly and easily just by turning circuit breaker switches on and off.

Qualification Check

The One Plug device is compatible with most meters; however there are a few that it will not work with. Please check your meter's 7 character number to verify its compatibility, and then call to order One Plug.

- The 2nd character must be a C and the 3rd character must not be a J, K, or L.



Once you find your meter number (shown in red) located on the front of the meter towards the bottom, and verify it is compatible, please write it down and have it handy when you call. *NOTE: The final determination of whether the One Plug device can be installed will be made by the electrician when they inspect the meter can and meter.*

Generators that work with the One Plug device

Most modern portable generators connect easily to the One Plug device. As a guide, the One Plug device should be used with a generator that has the following features:

- A 4 wire 120/240 volt outlet with a L14-20 or L14-30 locking
- Maximum wattage through the device is 7.2kW (30 AMPS), regardless of the overall capacity of your generator
- Works with gasoline and propane powered generators



L14-20 Locking



L14-30 Locking

Your generator's receptacle should look like one of these

Order Now – Before Next Hurricane Season!

Now is the best time to order One Plug for your home, before hurricane season. Our contractors are waiting. Installation takes less than 30 minutes and you don't have to be home as long as your meter is accessible. **And Installation is FREE.**

Call now. Eliminating those dangerous extension cords inside the house is a huge safety plus: no cords for people to trip over, no damaged cords to start fires, and you won't need to keep windows or doors open so extension cords can reach your generator. Get the peace of mind you deserve by preparing now for hurricane season!



Just call 1 877 ONE PLUG (1 877 663-7584) and charge \$829 plus applicable sales tax to your Visa, MasterCard or Discover credit card. **Generator Not Included.**

Terms and Conditions

Copyright ©1996 - 2007, FPL Energy Services, Inc. All rights reserved.

